

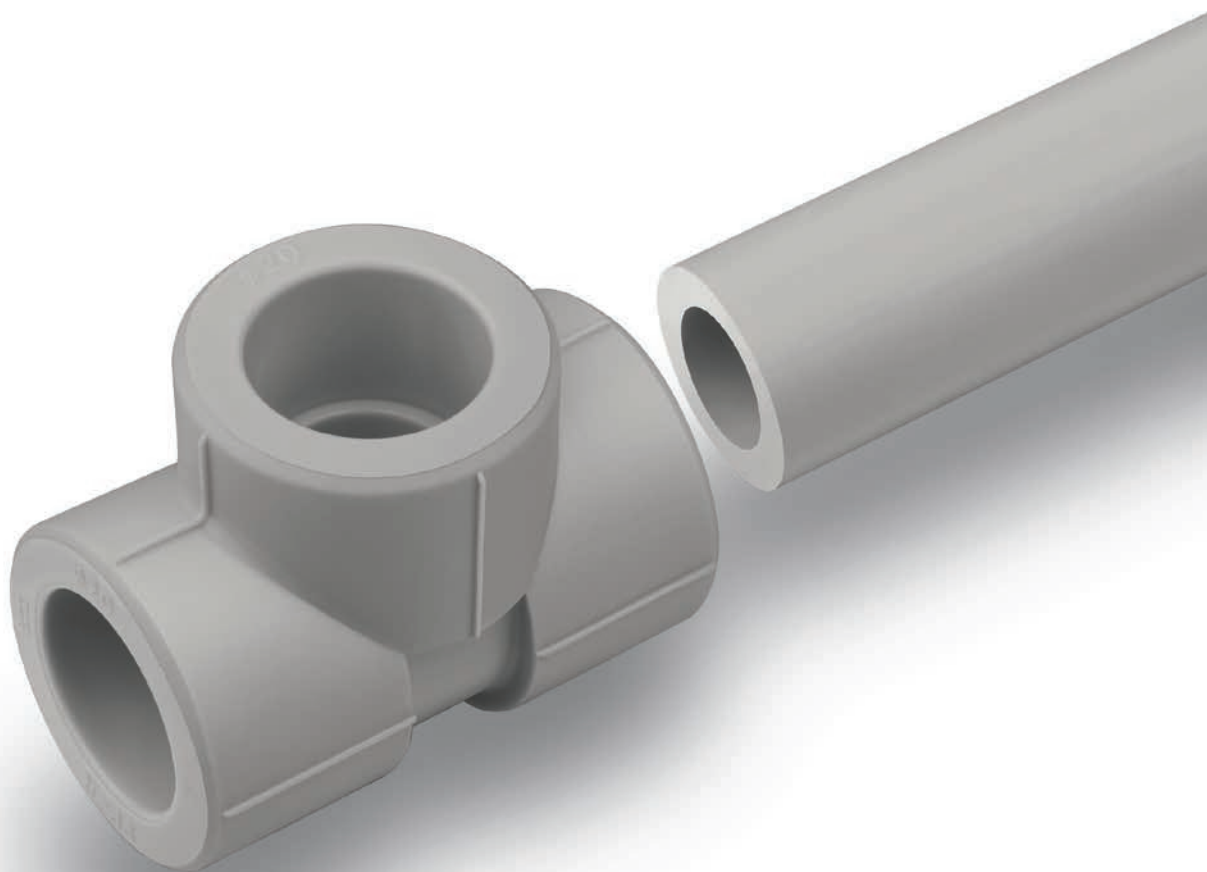
Ø 16–110 mm



SYSTEM **KAN-therm**

PP

High quality  
for reasonable price



TECHNOLOGY OF SUCCESS



ISO 9001

# System KAN-therm PP - assortment

## pipe PN10 (S5/SDR11)

GROUP: L

Size	*	Code	Packing	UM	Price EUR/UM
20×1,9		04000120	4/200	m	
25×2,3		04000125	4/160	m	
32×2,9		04000132	4/80	m	
40×3,7		04000140	4/60	m	
50×4,6		04000150	4/40	m	
63×5,8		04000163	4/24	m	
75×6,8		04000175	4/20	m	
90×8,2		04000190	4/12	m	
110×10,0		04000111	4/8	m	



## pipe PN16 (S3,2/SDR7,4)

GROUP: L

Size	*	Code	Packing	UM	Price EUR/UM
20×2,8		04000220	4/160	m	
25×3,5		04000225	4/100	m	
32×4,4		04000232	4/60	m	
40×5,5		04000240	4/40	m	
50×6,9		04000250	4/28	m	
63×8,6		04000263	4/16	m	
75×10,3		04000275	4/12	m	
90×12,3		04000290	4/8	m	
110×15,1		04000211	4/4	m	



## pipe PN20 (S2,5/SDR6)

GROUP: L

Size	*	Code	Packing	UM	Price EUR/UM
16×2,7		04000316	4/200	m	
20×3,4		04000320	4/160	m	
25×4,2		04000325	4/100	m	
32×5,4		04000332	4/60	m	
40×6,7		04000340	4/40	m	
50×8,3		04000350	4/28	m	
63×10,5		04000363	4/16	m	
75×12,5		04000375	4/12	m	
90×15,0		04000390	4/8	m	
110×18,3		04000311	4/4	m	



## pipe PN16 (S3,2/SDR7,4) Stabi Al

GROUP: M

Size	*	Code	Packing	UM	Price EUR/UM
20×2,8		03800020	4/100	m	
25×3,5		03800025	4/80	m	
32×4,4		03800032	4/40	m	
40×5,5		03800040	4/28	m	
50×6,9		03800050	4/20	m	
63×8,6		03800063	4/12	m	
75×10,3		03800075	4/8	m	



\* on request (delivery time up to 4 weeks)

\*\* availability by individual arrangements

\*\*\* till stock ends

pipe PN20 (S2,5/SDR6) Stabi Al

GROUP: M

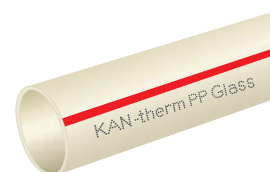
Size	*	Code	Packing	UM	Price EUR/UM
16×2,7		03900016	4/160	m	
20×3,4		03900020	4/100	m	
25×4,2		03900025	4/80	m	
32×5,4		03900032	4/40	m	
40×6,7		03900040	4/28	m	
50×8,3		03900050	4/20	m	
63×10,5		03900063	4/12	m	
75×12,5		03900075	4/8	m	
90×15,0		03900090	4/8	m	
110×18,3		03900011	4/4	m	



pipe PN16 (S3,2/SDR7,4) Glass

GROUP: M

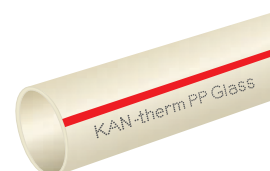
Size	*	Code	Packing	UM	Price EUR/UM
20×2,8		03810020	4/100	m	
25×3,5		03810025	4/80	m	
32×4,4		03810032	4/40	m	
40×5,5		03810040	4/28	m	
50×6,9		03810050	4/20	m	
63×8,6		03810063	4/12	m	
75×10,3		03810075	4/8	m	
90×12,3		03810090	4/8	m	
110×15,1		03810011	4/4	m	



pipe PN20 (S2,5/SDR6) Glass

GROUP: M

Size	*	Code	Packing	UM	Price EUR/UM
20×3,4		03910020	4/100	m	
25×4,2		03910025	4/80	m	
32×5,4		03910032	4/40	m	
40×6,7		03910040	4/28	m	
50×8,3		03910050	4/20	m	
63×10,5		03910063	4/12	m	
75×12,5		03910075	4/8	m	
90×15,0		03910090	4/8	m	
110×18,3		03910011	4/4	m	



saddle coupler PP x Push

GROUP: N

Size	*	Code	Packing	UM	Price EUR/UM
63 / 18×2		04118263	20/160	pc	
75 / 18×2		04118275	20/160	pc	
90 / 18×2		04118290	20/160	pc	
110 / 18×2		04118211	20/160	pc	



saddle coupler PP GW

GROUP: N

Size	*	Code	Packing	UM	Price EUR/UM
63×GW½		04118163	20/160	pc	
75×GW½		04118175	20/160	pc	
90×GW½		04118190	20/160	pc	
110×GW½		04118111	20/160	pc	



\* on request (delivery time up to 4 weeks)

\*\* availability by individual arrangements

\*\*\* till stock ends

**crossover**

**GROUP: N**

Size	*	Code	Packing	UM	Price EUR/UM
16		04101016	20	m	
20		04101020	20	m	
25		04101025	15	m	
32		04101032	10	m	

Crossover's diameter Ø150, length 370 mm



**crossover**

**GROUP: N**

Size	*	Code	Packing	UM	Price EUR/UM
16		04102016	200	m	
20		04102020	150	m	
25		04102025	100	m	
32		04102032	60	m	



**straight coupling**

**GROUP: N**

Size	*	Code	Packing	UM	Price EUR/UM
16		04103016	80/1360	pc	
20		04103020	100/700	pc	
25		04103025	50/550	pc	
32		04103032	40/280	pc	
40		04103040	30/180	pc	
50		04103050	-/110	pc	
63		04103063	-/60	pc	
75		04103075	-/45	pc	
90		04103090	-/24	pc	
110		04103011	-/16	pc	



\* on request (delivery time up to 4 weeks)

\*\* availability by individual arrangements

\*\*\* till stock ends

## reducer

GROUP: N

Size	*	Code	Packing	UM	Price EUR/UM
20×16		04108020	100/1200	pc	
25×16		04108025	50/1100	pc	
25×20		04108026	100/900	pc	
32×20		04108032	80/640	pc	
32×25		04108033	80/560	pc	
40×20		04108040	50/400	pc	
40×25		04108041	50/350	pc	
40×32		04108042	50/300	pc	
50×32		04108050	30/180	pc	
50×40		04108051	30/150	pc	
63×32		04108063	-/100	pc	
63×40		04108064	-/100	pc	
63×50		04108065	-/100	pc	
75×50		04108075	-/80	pc	
75×63		04108076	-/50	pc	
90×50		04108090	-/48	pc	
90×63		04108091	-/45	pc	
90×75		04108092	-/45	pc	
110×63		04108012	-/27	pc	
110×75		04108013	-/27	pc	
110×90		04108011	-/27	pc	



## straight female connector

GROUP: N

Size	*	Code	Packing	UM	Price EUR/UM
16×½"		04103116	20/200	pc	
20×½"		04103120	20/180	pc	
20×¾"		04103121	30/150	pc	
25×½"		04103125	20/160	pc	
25×¾"		04103126	30/150	pc	



## straight female connector

GROUP: N

Size	*	Code	Packing	UM	Price EUR/UM
32×¾"		04103131	-/100	pc	
32×1"		04103132	-/100	pc	
40×1¼"		04103140	-/60	pc	
50×1½"		04103150	-/35	pc	
63×2"		04103163	-/18	pc	
75×2½"		04103175	-/12	pc	
90×3"		04103190	-/8	pc	



**Caution:**  
spanner can be used within the element.

## straight male connector

GROUP: N

Size	*	Code	Packing	UM	Price EUR/UM
16×½"		04103216	20/160	pc	
20×½"		04103220	20/160	pc	
20×¾"		04103221	30/120	pc	
25×½"		04103225	20/140	pc	
25×¾"		04103226	30/120	pc	



\* on request (delivery time up to 4 weeks)

\*\* availability by individual arrangements

\*\*\* till stock ends

## straight male connector

GROUP: N

Size	*	Code	Packing	UM	Price EUR/UM
32×¾"		04103231	-/80	pc	
32×1"		04103232	-/80	pc	
40×1¼"		04103240	-/50	pc	
50×1½"		04103250	-/36	pc	
63×2"		04103263	-/18	pc	
75×2½"		04103275	-/10	pc	
90×3"		04103290	-/6	pc	

Caution:  
spanner can be used within the element



## elbow 90°

GROUP: N

Size	*	Code	Packing	UM	Price EUR/UM
16		04104016	50/900	pc	
20		04104020	100/500	pc	
25		04104025	50/350	pc	
32		04104032	20/200	pc	
40		04104040	20/120	pc	
50		04104050	60	pc	
63		04104063	32	pc	
75		04104075	20	pc	
90		04104090	12	pc	
110		04104011	8	pc	



## nipple elbow 90°

GROUP: N

Size	*	Code	Packing	UM	Price EUR/UM
16		04104216	50/1000	pc	
20		04104220	100/600	pc	
25		04104225	50/400	pc	
32		04104232	50/200	pc	



## elbow 45°

GROUP: N

Size	*	Code	Packing	UM	Price EUR/UM
16		04104316	50/950	pc	
20		04104320	100/700	pc	
25		04104325	50/400	pc	
32		04104332	40/200	pc	
40		04104340	20/140	pc	
50		04104350	-/80	pc	
63		04104363	-/40	pc	
75		04104375	-/25	pc	
90		04104390	-/14	pc	



## nipple elbow 45°

GROUP: N

Size	*	Code	Packing	UM	Price EUR/UM
16		04104116	50/1050	pc	
20		04104120	100/700	pc	
25		04104125	50/450	pc	



\* on request (delivery time up to 4 weeks)

\*\* availability by individual arrangements

\*\*\* till stock ends

## wallplate elbow

GROUP: N

Size	*	Code	Packing	UM	Price EUR/UM
16×½"		04104416	20/140	pc	
20×½"		04104420	20/140	pc	
25×½"		04104425	20/120	pc	



## male elbow 90°

GROUP: N

Size	*	Code	Packing	UM	Price EUR/UM
16×½"		04104516	20/140	pc	
20×½"		04104520	30/90	pc	
20×¾"		04104521	30/90	pc	
25×½"		04104525	20/120	pc	
25×¾"		04104526	30/90	pc	
32×¾"		04104532	30/60	pc	
32×1"		04104534	-/50	pc	



## elbow with female thread

GROUP: N

Size	*	Code	Packing	UM	Price EUR/UM
16×½"		04104616	20/180	pc	
20×½"		04104620	20/140	pc	
20×¾"		04104621	30/120	pc	
25×½"		04104625	20/120	pc	
25×¾"		04104626	30/120	pc	
32×¾"		04104632	30/90	pc	
32×1"		04104634	-/50	pc	



## reducing tee

GROUP: N

Size	*	Code	Packing	UM	Price EUR/UM
20×16×20		04105020	20/380	pc	
25×16×25		04105025	20/260	pc	
25×20×25		04105026	20/240	pc	
32×16×32		04105032	20/140	pc	
32×20×32		04105033	20/140	pc	
32×25×32		04105034	20/140	pc	
40×20×40		04105040	20/80	pc	
40×25×40		04105041	15/90	pc	
40×32×40		04105042	15/90	pc	
50×20×50		04105050	-/60	pc	
50×25×50		04105051	-/65	pc	
50×32×50		04105052	-/60	pc	
50×40×50		04105053	-/50	pc	
63×32×63		04105063	-/30	pc	
63×40×63		04105064	-/22	pc	
63×50×63		04105065	-/22	pc	
75×40×75		04105075	-/17	pc	
90×50×90		04105090	-/12	pc	
90×63×90		04105091	-/10	pc	
90×75×90		04105092	-/12	pc	



\* on request (delivery time up to 4 weeks)

\*\* availability by individual arrangements

\*\*\* till stock ends

## tee

GROUP: N

Size	*	Code	Packing	UM	Price EUR/UM
16		04105116	40/640	pc	
20		04105120	80/400	pc	
25		04105125	20/240	pc	
32		04105132	20/140	pc	
40		04105140	15/75	pc	
50		04105150	-/50	pc	
63		04105163	-/24	pc	
75		04105175	-/15	pc	
90		04105190	-/10	pc	
110		04105111	-/8	pc	



## corner tee

GROUP: N

Size	*	Code	Packing	UM	Price EUR/UM
20		04105416	40/360	pc	



## four way fitting

GROUP: N

Size	*	Code	Packing	UM	Price EUR/UM
16		04106016	80/480	pc	
20		04106020	40/320	pc	



## tee with male thread

GROUP: N

Size	*	Code	Packing	UM	Price EUR/UM
20 × 1/2"		04105316	20/120	pc	



## tee with female thread

GROUP: N

Size	*	Code	Packing	UM	Price EUR/UM
16 × 1/2" × 16		04105216	20/140	pc	
20 × 1/2" × 20		04105220	20/120	pc	
20 × 3/4" × 20		04105221	30/90	pc	
25 × 1/2" × 25		04105225	20/180	pc	
25 × 3/4" × 25		04105226	30/180	pc	
32 × 3/4" × 32		04105232	15/60	pc	
32 × 1" × 32		04105233	15/60	pc	



## straight union with gasket

GROUP: N

Size	*	Code	Packing	UM	Price EUR/UM
20 × 3/4"		04107020	20/200	pc	



\* on request (delivery time up to 4 weeks)

\*\* availability by individual arrangements

\*\*\* till stock ends



### half union with flat gasket

GROUP: N

Size	*	Code	Packing	UM	Price EUR/UM
16×¾"		04107116	50/300	pc	
20×¾"		04107120	50/400	pc	
25×1"		04107125	20/100	pc	



### union with flat seal

GROUP: N

Size	*	Code	Packing	UM	Price EUR/UM
16×½"		04107216	20/200	pc	
20×½"		04107220	20/200	pc	
20×¾"		04107221	20/200	pc	
25×¾"		04107225	20/100	pc	
25×1"		04107226	20/100	pc	
32×1"		04107232	30/120	pc	



### flange with flat O-Ring seal

GROUP: N

Size	*	Code	Packing	UM	Price EUR/UM
40		04109340	1/40	pc	
50		04109350	1/30	pc	
63		04109360	1/20	pc	
75		04109375	1/15	pc	
90		04109390	1/10	pc	
110		04109310	1/6	pc	



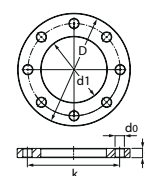
### steel flange PN16

GROUP: N

Size	*	Code	Packing	UM	Price EUR/UM
40		04109140	1	pc	
50		04109150	1	pc	
63		04109163	1	pc	
75		04109175	1	pc	
90		04109190	1	pc	
110		04109110	1	pc	



DN	D	d1	k	d0	q	N
32	140	43	100	18	18	4
40	150	53	110	18	18	4
50	165	66	125	18	20	4
65	185	78	145	18	20	8
80	200	95	160	18	20	8
100	220	114	180	18	22	8



\* on request (delivery time up to 4 weeks)

\*\* availability by individual arrangements

\*\*\* till stock ends

## stop end

GROUP: N

Size	*	Code	Packing	UM	Price EUR/UM
16		04110016	100/1000	pc	
20		04110020	200/1000	pc	
25		04110025	100/700	pc	
32		04110032	50/500	pc	
40		04110040	50/250	pc	
50		04110050	-/170	pc	
63		04110063	-/80	pc	
75		04110075	-/50	pc	
90		04110090	-/30	pc	
110		04110011	-/20	pc	



## ball valve

GROUP: N

Size	*	Code	Packing	UM	Price EUR/UM
20		04111220	10/90	pc	
25		04111225	10/50	pc	
32		04111232	5/25	pc	
40		04111240	5/15	pc	
50		04111250	2/10	pc	
63		04111263	2/8	pc	
75		04111275	1/5	pc	



## globe valve

GROUP: N

Size	*	Code	Packing	UM	Price EUR/UM
20		04112220	1/30	pc	
25		04112225	1/30	pc	
32		04112232	1/30	pc	



## concealed globe valve

GROUP: N

Size	*	Code	Packing	UM	Price EUR/UM
20		04113220	1/30	pc	
25		04113225	1/30	pc	
32		04113232	1/30	pc	

Valves delivered with two plugs for marking hot water (red) or cold water (blue).



## concealed globe valve with masking and mini handle

GROUP: N

Size	*	Code	Packing	UM	Price EUR/UM
20		04114220	1/40	pc	
25		04114225	1/40	pc	
32		04114232	1/40	pc	



\* on request (delivery time up to 4 weeks)

\*\* availability by individual arrangements

\*\*\* till stock ends

## pipe clamp

GROUP: N

Size	*	Code	Packing	UM	Price EUR/UM
16		04111016	20/1000	pc	
20		04111020	20/800	pc	
25		04111025	20/700	pc	
32		04111032	20/440	pc	
40		04111040	20/300	pc	
50		04111050	20/240	pc	
63		04111063	20/120	pc	
75		04111075	20/100	pc	
90		04111090	10/60	pc	

**Caution:**

Use only for uniform pipes.  
For Stabi pipes use clamps with rubber insert.



## single pipe clamp with rubber dumper - double-sided lock with metric thread

GROUP: A

Size	*	Code	Packing	UM	Price EUR/UM
15-18		UP-G16	100	pc	
20-23		UP-G20	100	pc	
25-28		UP-G25	100	pc	
32-36		UP-G32	50	pc	
40-44		UP-G40	50	pc	
47-52		UP-G50	50	pc	
57-63		UP-G63	50	pc	
75		UP-G75	25	pc	
90		UP-G90	25	pc	
110		UP-G110	25	pc	

**Caution:**

Single pipe clamp with rubber dumper contains the closing screws (code WK 8x70) and extension anchor (code KR-12).



## double pipe clamp with rubber dumper - double-sided lock with metric thread

GROUP: A

Size	*	Code	Packing	UM	Price EUR/UM
16		UD-G16	50	pc	
20		UD-G20	50	pc	
25		UD-G25	50	pc	
32		UD-G32	50	pc	

**Caution:**

Single pipe clamp with rubber dumper contains the closing screws (code WK 8x70) and extension anchor (code KR-12).



## plastic mounting plate

GROUP: N

Size	*	Code	Packing	UM	Price EUR/UM
16-40		04111000	30/150	pc	



# Tools PP

## coarse file for Stabi Al pipe

GROUP: K

Size	*	Code	Packing	UM	Price EUR/UM
16/20		04212016	1	pc	
20/25		04212020	1	pc	
25/32		04212025	1	pc	
32/40		04212032	1	pc	
50		04212050	1	pc	
63		04212063	1	pc	
75		04212075	1	pc	
90		04212090	1	pc	
110		04212011	1	pc	



## coarse file blade

GROUP: K

	*	Code	Packing	UM	Price EUR/UM
	*	04210000	1	pc	



## pipe cutters

GROUP: K

Size	*	Code	Packing	UM	Price EUR/UM
16-40 mm		04212200	1	pc	



## roll-cutters

GROUP: K

Size	*	Code	Packing	UM	Price EUR/UM
50-100 mm		04212201	1	pc	



## welding machine

GROUP: K

Size, power	*	Code	Packing	UM	Price EUR/UM
16-50 mm, 800 W		04212100	1	pc	
63-110 mm, 1600 W		04212101	1	pc	

**Caution:**

Every set includes: electric welding machine, welding machine's stand, metal box, set of inserts (depending on the diameter).



## long clamping screw for welding machine PP - maintenance component

GROUP: K

	*	Code	Packing	UM	Price EUR/UM
	*	04212104	1	pc	



\* on request (delivery time up to 4 weeks)

\*\* availability by individual arrangements

\*\*\* till stock ends

### tool kit for saddle coupler assembly

GROUP: K

Size, name	*	Code	Packing	UM	Price EUR/UM
63 - set of welding inserts		04212463	1	pc	
75 - set of welding inserts		04212475	1	pc	
90 - set of welding inserts		04212490	1	pc	
110 - set of welding inserts		04212411	1	pc	
25 - drill		04212425	1	pc	



### welder inserts

GROUP: K

Size	*	Code	Packing	UM	Price EUR/UM
16		04212316	1	pc	
20		04212320	1	pc	
25		04212325	1	pc	
32		04212332	1	pc	
40		04212340	1	pc	
50		04212350	1	pc	
63		04212363	1	pc	
75		04212375	1	pc	
90		04212390	1	pc	
110		04212311	1	pc	

